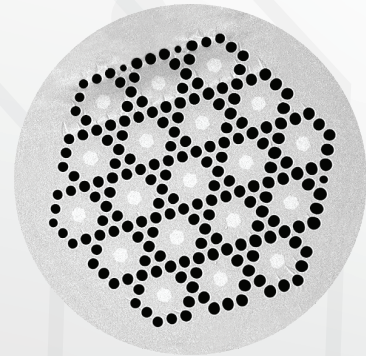
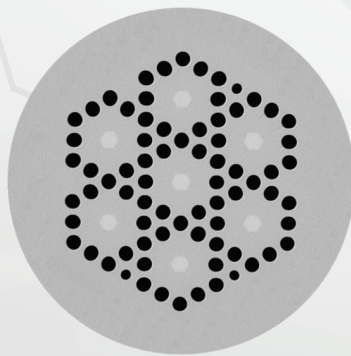




IPT-CORE

TO MULTIPLY YOUR LINK CAPACITY



Next-gen backward-compatible **multicore fiber** with unprecedented bandwidth within the standard physical envelope

FEATURES

Increased link capacity provided by several individual cores enabling **Spatial Division Multiplexing** within the standard fiber outer diameter

Compatible with existing interfaces due to **ITU-T G.652 & G.657B3 compliance**

Unique internal design to avoid **crosstalk** and provide **bend-immunity**

High space-efficiency, featuring **more physical channels per cm²**

Lower energy consumption and lower operational costs

Complete solution available with ready fan-in/fan-out connectors to network installations

Available in **specialty metalized coatings** for resilience to hazardous environments

Special core composition available to enable active and/or radiation hardened multicore fibers



SPECS

- Fiber type: single- of multimode
- Network standards: ITU-T G.652 & G.657B3
- Cross-talk: -40 dB for 1550 nm
- Bend loss: <0.1 dB (better than ITU-T G.657.B3)



APPLICATIONS

- 5G network infrastructure – increased bandwidth within a single fiber
- Modernization of the existing dense network infrastructure – more network capacity within the already limited space
- Data Centers – improved airflow & thermal management thanks to the cabling reduction
- Industry 4.0 information networks – higher bandwidth in a single fiber, ready for harsh environment applications
- Aviation – reduction of cabling with multiple cores within one fiber
- Space – payload and space reduction with space-hardened multicore fibers; active fiber amplifiers

