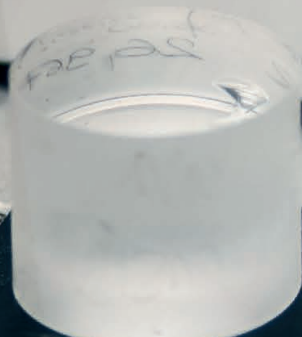




FAST MEASUREMENT OF
LENS THICKNESS



Precise lens thickness measurement in a blink of an eye
is now possible with our unique device





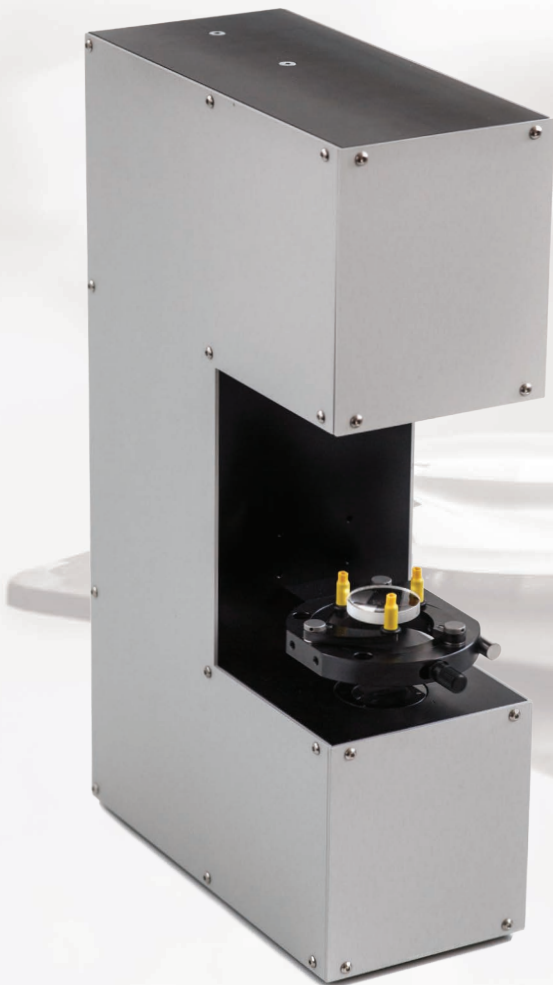
FEATURES

We present a portable device that allows fast and non-contact measurements of lenses and other optical elements of many shapes and sizes. By operating in transmission our device can handle tilted or unpolished lenses. With unbeatable setup times, our device is the first that can be used for fully automated measurements on production lines.



SPECS

- Non-contact measurement of central thickness
- Measurement in as little as 2s
- Typical accuracy: $\pm 5 \mu\text{m}$
- Guaranteed accuracy: $\pm 10 \mu\text{m}$
- Dimensions: 37 cm x 22 cm x 10 cm



QUICK AND EASY
LENS MOUNTING

NON-CONTACT
MEASUREMENT

READY FOR FULL
AUTOMATION

We offer fully **automated measurements** and **customizations** to meet your specific requirements for:

- accuracy,
- measurement time,
- size of target optical elements (small or large),
- specific target materials (glass or crystals)